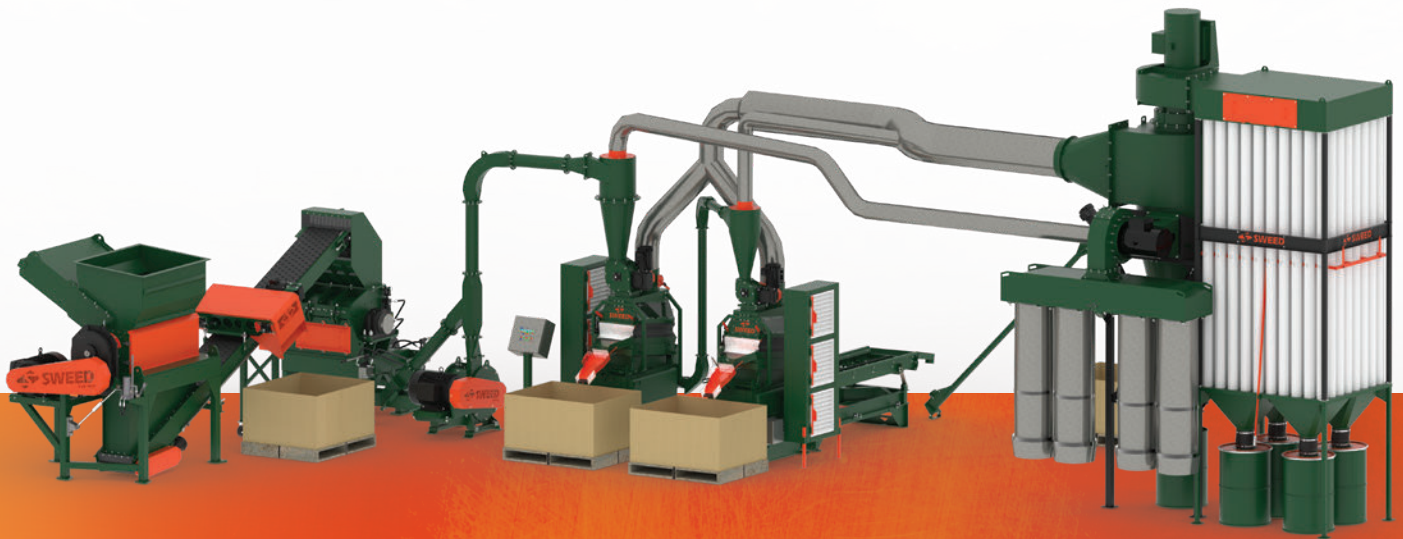


SPECIALIZED SEPARATION SYSTEMS FOR RECYCLING

SOLUTIONS FOR COPPER & ALUMINUM RECOVERY



RECYCLE WIRE FROM COMMUNICATION
CABLE TO POWER TRANSMISSION,
ASR, ACR, WIRE HARNESS & MORE!

OUR STORY

THE SYSTEMS EXPERTS

For over 60 years, our products have evolved to meet the ever-changing needs of our customers and the industries they serve. As pioneers in recycling solutions, we offer a commitment of customer focused service, state-of-the-art engineering, and quality craftsmanship in every project. We believe that smart products lead to elevated production in a safe and sustainable way.

We are an American company.

SWEED is a privately held American manufacturing company that designs, manufactures, and sells quality equipment to a global audience.

We are innovation.

Innovation is our lifeblood. We are always searching for ways to improve our products and our processes. We consistently challenge the status quo and search for ways to improve tomorrow's needs – not just today's.

We believe in quality.

We understand that quality means longer-lasting and better standing. High operational expectations drive our intense need to provide the best on the market.

We evolve technology.

We use technology to improve efficiencies in operations and machinery. We use selective integration to maintain strict standards for performance.

We enhance safety.

Our customers' work environments can easily turn dangerous with less than optimal equipment in place. We'll keep them safe.

We increase productivity.

We help you do more by making you do less.

We are knowledgeable.

Our mechanical engineers work closely with customers to ensure products are designed, manufactured and installed to exceed customer expectations.

We are pioneers.

With the constant evolution of manufacturing, we've dedicated decades to creating product lines that are innovative, efficient, and safe.

SWEED DIFFERENCE

- » Unsurpassed engineering support
- » One year limited warranty on all new equipment
- » Quality craftsmanship
- » Custom options to suit application & production needs
- » Designed for easy access for maintenance
- » Designed to provide years of reliable service
- » Custom footprints, design layouts and controls
- » Made and supported in the USA

SWEED systems are built to last, engineered to fit the customer's application, and made and supported in the USA.

**Made in
the USA**

**MADE AND SUPPORTED
IN THE UNITED STATES**



STANDARD AND CUSTOM ENGINEERED SOLUTIONS FOR NON-FERROUS RECOVERY SEPARATION SYSTEMS

Chopping Line for Non-Ferrous Recovery

SWEED offers standard and custom non-ferrous separation systems to maximize copper and aluminum recovery. Whether you need a system for a small operation or a high-volume production facility, SWEED has a solution.

SWEED’s separation systems recycle insulated wire from communication cable to power transmission, ACR, wire harness, ASR, and more!

SWEED mechanical and electrical engineers work closely with customers to ensure satisfaction from the design phase, to after-installation support. SWEED Systems are upgradeable; additional processors, components and control can be integrated to enhance system capacity, efficiency, performance AND payback, as volume and/or processing needs change.

OPTIONAL FEATURES

- » SWEED Scrap Chopper Model 5703 XHD
- » Custom infeed conveyance
- » Turbo Mill bypass
- » Customized dust control options
- » Surge bins for maximizing material output
- » Intermediate screening for fraction separation

STANDARD FEATURES

- » UL 508A Control Cabinet with Allen Bradley PLC & HMI.
- » Motor Control Center (MCC) upon request and for larger systems
- » Pneumatic conveyance utilizing cyclones and airlocks, minimizing the system footprint, and cooler operating temperatures
- » Customized location of E-stops
- » Up to 99.9% purity results depending on material
- » Durable and quality craftsmanship
- » Designed for easy maintenance access
- » One year warranty
- » Custom footprint tailored to your requirements
- » Superior engineering - low operation costs
- » Made and supported in the USA

OPTIONAL FEATURES CONT.

- » Skid mounting
- » Remote access for controls and programming
- » Custom electrical panels engineered for expansion
- » Customized processor positioning - hoods and spillways

PRODUCT SPECIFICATIONS

PERFORMANCE DATA	
Standard Systems: Production Capacity	Stock wire choppers up to 2,000 and 4,000 pounds per hour (input), dependent on material and system configurations. Optional processors and features available.
Custom Engineered Solutions	Custom designed wire choppers, engineered to customer need and requirements for throughput.
Prechopper Models	PCR Models: Single Shaft Processors from 50HP to 125HP.
Granulator Models	SG Models: High-Speed Granulator from 40HP to 125HP.
Turbo Mill Models	TM Models: High Speed material liberating processor from 40HP to 150HP.
Air Table Models	Density Separators ranging in capacity from 2,000 to 10,000 pounds per hour, depending on material.
Dust Collector Systems	Stock and custom designed dust collectors, built to accommodate system design.
Electrical and Controls	Systems require 3-Phase power: In-house Electrical and Controls packages, designed for wire chopping operations.



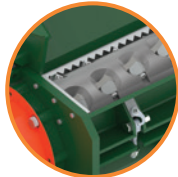
THINKING OUTSIDE THE BOX

TO MEET YOUR THROUGHPUT, FOOTPRINT, & PROCESSING GOALS



System Example for Volumes Ranging Up to 2,000 Lbs per Hour

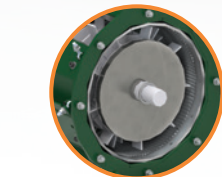
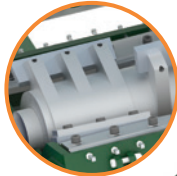
SWEED 50 HP
Prechopper Model PCR1048
with Hydraulic Ram Assist



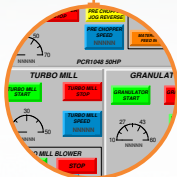
Inclined Conveyor with
Overhead Magnetic Cross-
Belt for Ferrous Removal



SWEED 40HP 3-Lobe
Granulator Model SG1826



SWEED 40 HP
Turbo-Mill Model TM1815
with Optional Bypass to
Accommodate Both Low
and High Yield Wire



User Friendly HMI
Touchscreen for Full
Visibility of the System's
Functionality and
Operations

SWEED 3G Density
Separation Tables,
1 & 2 Table Designs Available



Two Deck Sifter Table
for Fine Material
Separation

Dust Collection System



Auger Outfeed for
Discharging Plastic Waste

Actual system configuration is determined by the type of material to be processed and processing goals.

TAILORED DESIGNS

THAT WON'T BOX YOU IN



System Example of a SWEED Custom Engineered Solution

SWEED Vibratory Sifter Screen for Material Sizing Before Density Separation

SWEED Separation Table Mounted, Auger Driven Metering Bin

Auger Driven Metering Bin Automatically Feeds Turbo-Mill Depending on Load

SWEED TM 4030 Turbo Mill for Material Shaping and Separation Efficiency

SWEED SG1840 High Speed Granulator for Efficient Material Sizing and Liberation



SWEED 5G/7G Density Separation Table Assemblies with Metering Bins in Series or Parallel

SWEED PCR1856 Single-Shaft Shredder (Pre-Chopper) for Bulk Wire Feeding

SWEED Cross Belt Magnetic Separation for Ferrous Removal

Actual system configuration is determined by the type of material to be processed and processing goals.

| SWEED SYSTEM WORTHY OF AN ENCORE

As Seen In Recycling Today Magazine

Written by: Josh Francis of Eugene, Oregon-based Revolution Design Group

McKinney, Texas-based aluminum and copper wire producer Encore Wire Corp. is now using four wire and cable chopping machines supplied by Gold Hill, Oregon-based SWEED Machinery Inc.

Encore Wire has what it describes as “enormous production capacity” to make wire that is distributed widely throughout the United States. But the company’s process engineer Scott Thompson says its scrap processing capabilities lagged behind in sophistication. “We used to have a very labor intensive scrapping process,” Thompson says. “It was a huge labor cost and could potentially pose a hazard to employees.”

At first, the company updated its scrap processing system with a machine from a different equipment manufacturer. “It was a poorly designed and outdated machine,” Thompson says. “The only part of it that worked effectively was a small chopper by SWEED, and it worked really well.”

After considering that, Thompson called SWEED, who he says worked closely with him to understand Encore’s needs, capacity and goals. Four years later, Encore now has three additional SWEED machines customized to its needs, and its scrap processing system has never been more streamlined, according to Thompson.

“SWEED’s machines have exceeded expectations,” he says. Encore uses SWEED’s Model 5703 XHD scrap chopper and PCR 1034 pre-chopper to process linear scrap material. Encore can thus efficiently liberate the



Encore Wire’s SWEED Machinery system has been designed to process from 3,000 to 6,000 pounds per hour of wire and cable. The four-output system is designed to separate steel, aluminum, copper and plastic.

copper and aluminum from the products fed into the machines, says Thompson.

Shaker tables further process the PVC, XLPE and nylon plastic coatings by isolating them from the nonferrous copper and aluminum materials to be reclaimed. “We produce and ship millions of pounds of finished product every year,” states Thompson. “A result of manufacturing that much volume is we generate PVC, XLPE and aluminum scrap every year, which diminishes our bottom line.”

SWEED’s machines are enabling Encore to efficiently reclaim reusable raw materials at a lower cost, all while increasing quality and volume of its renewable raw materials internally, according to the company. This increase in material use efficiency and labor savings has resulted in Encore increasing its bottom line.

Throughout this process, working with SWEED has been seamless, according to Thompson. “We’re in regular contact for preventive maintenance, and I can call or text any time and get an answer right away,” he comments. “These days, it’s hard to find a company like that.”

Because SWEED’s equipment is built in the U.S., orders and parts arrive quickly. “The locality and flexibility are great,” says Thompson. “You don’t have to wait weeks for parts shipped from England or Germany.” Recently, when Encore needed a custom auger, SWEED was able to build it to Encore’s specifications and ship it to them quickly without any workflow interruption, he says.

“It’s a great company,” states Thompson, adding that SWEED provides “old school manufacturing that’s down-to-earth and easy to deal with. They’ve got a good way of doing business – just like us.”



SWEED 5703 XHD despooling BX Cable.



Large BX Cable being despoiled and chopped by SWEED’s 5703 XHD



Recovered Copper in Encore System



SWEED’s machines have exceeded expectations. It’s a great company.

It’s hard to find company like SWEED. They’ve got a good way of doing business.
—Scott Thompson, Encore Wire



SOLUTION FOR RECOVERING COPPER FROM LOW-YIELD WIRE

As Seen In Wire and Cable Technology International Magazine

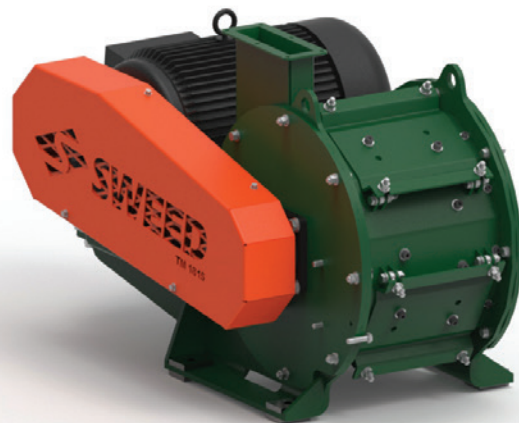
SWEED Machinery, Inc., Gold Hill, OR, USA is in the business of finding innovative solutions for its customers' needs. Melissa Tally, SWEED's Marketing Manager, reports, "When we began seeing an increase in low-yield copper recovery inquiries two years ago, we decided to design and manufacture our version of a machine that could address the gap our customers were experiencing. In true SWEED fashion, this design allows for more adjustment of the process, while being a much sturdier piece of equipment."

"Our Turbo Mill effectively and efficiently processes #2 copper wire and other fine wire, making it easier to separate," says Chris Salyer, SWEED Engineering Director. "Before it hit the market, the primary source for customers in the USA for a turbo mill was via international manufacturers. We saw an opportunity to offer our world-class engineering, service/technical support."

How the New Technology Works

To separate the copper from the plastic surrounding it, the Turbo Mill beats the material around, tumbling it over and over to pulverize any remaining insulation. This friction rips the plastic away from the copper wire, which is balled into tiny pellet-like pieces. In this shape, the balled copper "flows" freely like fine sand, allowing it to separate easily from the plastic; straight fine wire will nest and entrap plastic making it difficult to separate effectively. The Turbo Mill provides many distinct benefits in the copper liberation process.

"Because it makes the balled copper easier to separate from the plastic, the Turbo Mill increases copper recovery," Salyer says. "Recovered copper also has an increased purity because the process that removes it from the plastic ensures that the two materials are completely separated. Best of all, it increases your processing capability. Without a Turbo Mill, in SWEED's entry level chopping line someone might use an 1/8" screen, which allows for 1500 to 2000 lb of processing per hour. With a Turbo Mill, you can use a larger 3/16" or 1/4" screen, which more than doubles your throughput and lets you process 4000 to 5000 lb of material every hour."



SWEED Turbo Mill Model TN1815

That increase is also reflected in the user's bottom line. With a higher quantity of purer copper, more scrap can be reused or sold at a higher value.

Easy System Integration

The Turbo Mill, like every SWEED machine, is built with usability as a priority. With a line that ranges from 40 to 150 HP, SWEED's Turbo Mill can easily integrate into any existing system.

"We care a lot about providing high-quality service, which is why we will come out and help customers set up their new machines," Salyer says.

That ease of use also extends beyond installation - once the Turbo Mill is integrated into the system, it stays simple to run and maintain.

"It usually feeds right from the granulator, and only needs standard maintenance every million pounds or so," says Salyer. "Once it's up, it just runs itself. It just goes."

With many benefits and easy installation / maintenance, SWEED's Turbo Mill is a must-have for any company that processes #2 wire. It's a small unit with a big impact.



Granulated mixed low yield ICW prior to running through turbo mill.



The end product from mixed low yield ICW after running through SWEED Turbo Mill.



A Screenless Processor That Liberates Fine Copper Wire From the Plastic



ORDERING INFO

GET STARTED WITH SWEED

SWEED is dedicated to providing expert sales and support before and after your purchase. SWEED's sales and engineering are available to assist with machine quotes and general information regarding SWEED's product line.

CORPORATE OFFICE

653 2nd Ave, PO Box 228
Gold Hill, Oregon, 97525

Toll Free: 1-800-888-1352

Fax: 1-541-855-1165



Visit us online to learn more about how SWEED can benefit your company
www.sweed.com





SWEED

653 2nd Ave, PO Box 228
Gold Hill, Oregon, 97525

Toll Free: 1-800-888-1352
Fax: 541-855-1165

www.sweed.com



**MADE AND SUPPORTED
IN THE UNITED STATES**